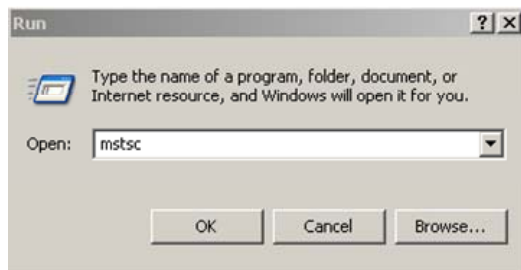


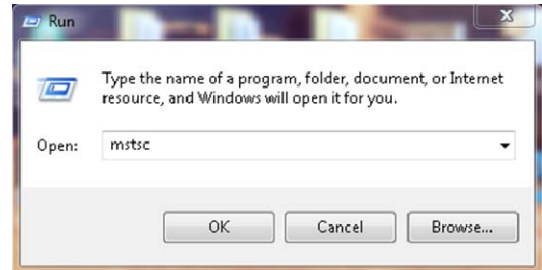
Accessing Remote Desktop From Outside the District Network Using MSTSC

1. Choose Start > Run
2. Type **mstsc**

Windows XP



Windows 7

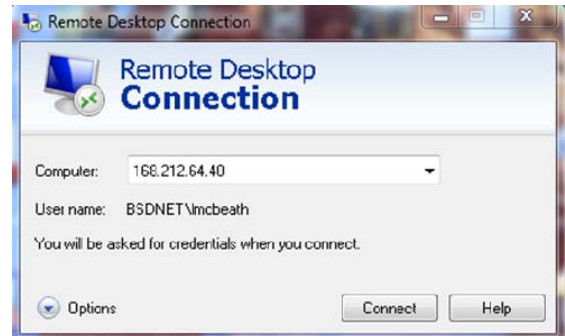


3. Click OK
4. Type **168.212.64.40** in the computer name field

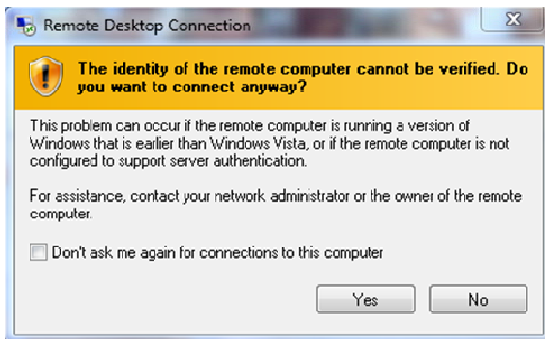
Windows XP



Windows 7



5. Click Connect
6. IF you get the following warning, click yes:



7. Logon to the remote system with your logon and password, the same as you would if you were sitting at your desk. The logon dialog box may look similar to one of the samples below. The computer needs 3 pieces of information: Your logon name, your password, and the domain (BSDNET).

NOTE the different ways to pass the domain name

